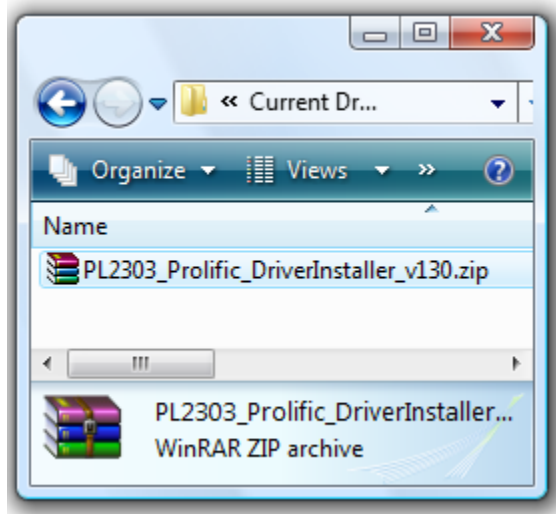
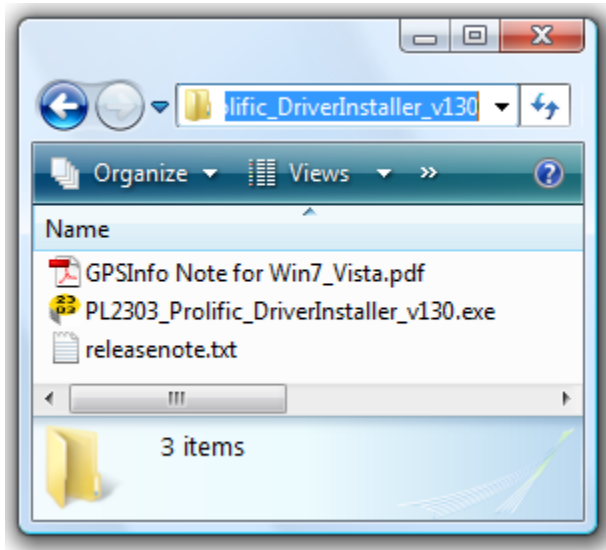


PROLIFIC DRIVER INSTALLER SETUP

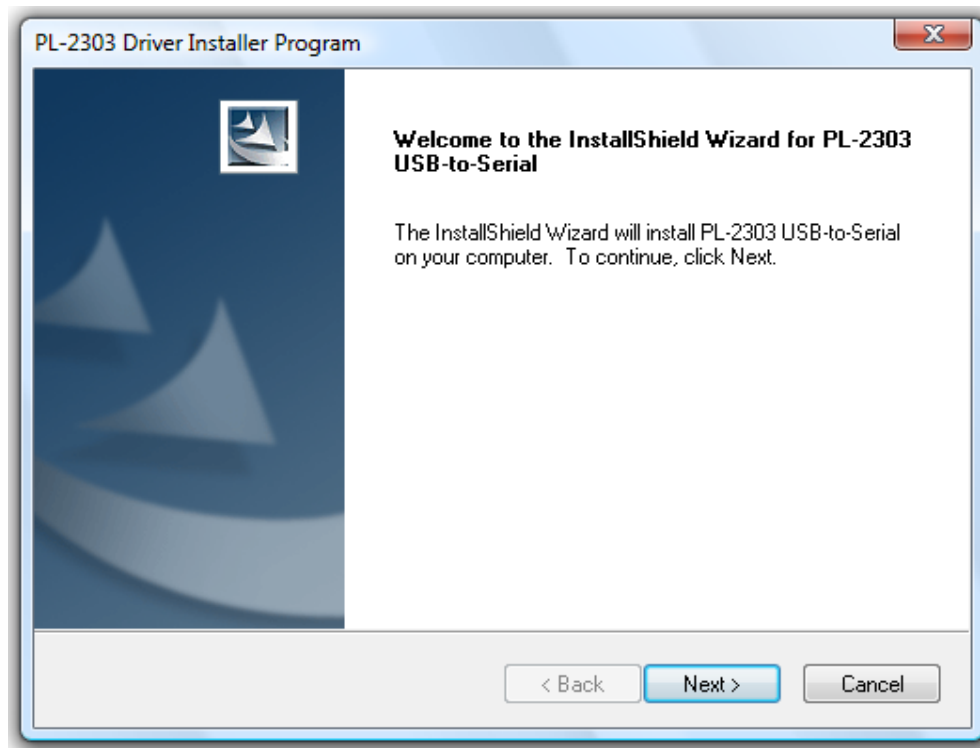
- 1.) Save the zip file unto your **Desktop**. Double-click on the **PL_2303_Prolific_DriverInstaller_v130**.
Extract the file with an extraction tool. Make sure to do this first before installing the application.



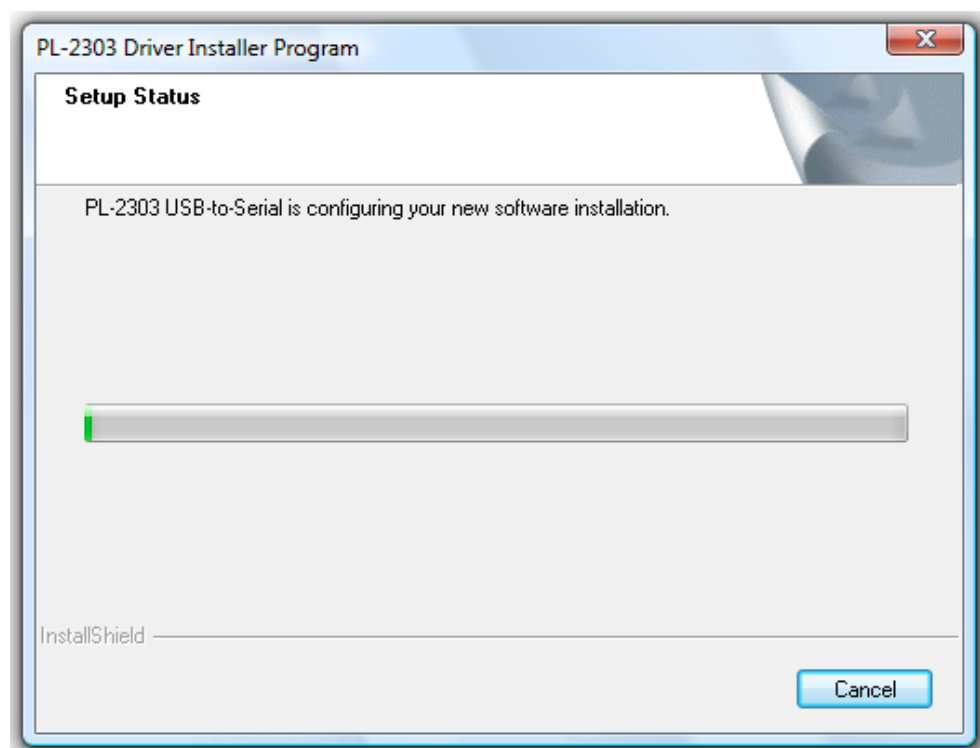
- 2.) There are three files included as shown below. Double-click on the **PL2303** exe file.



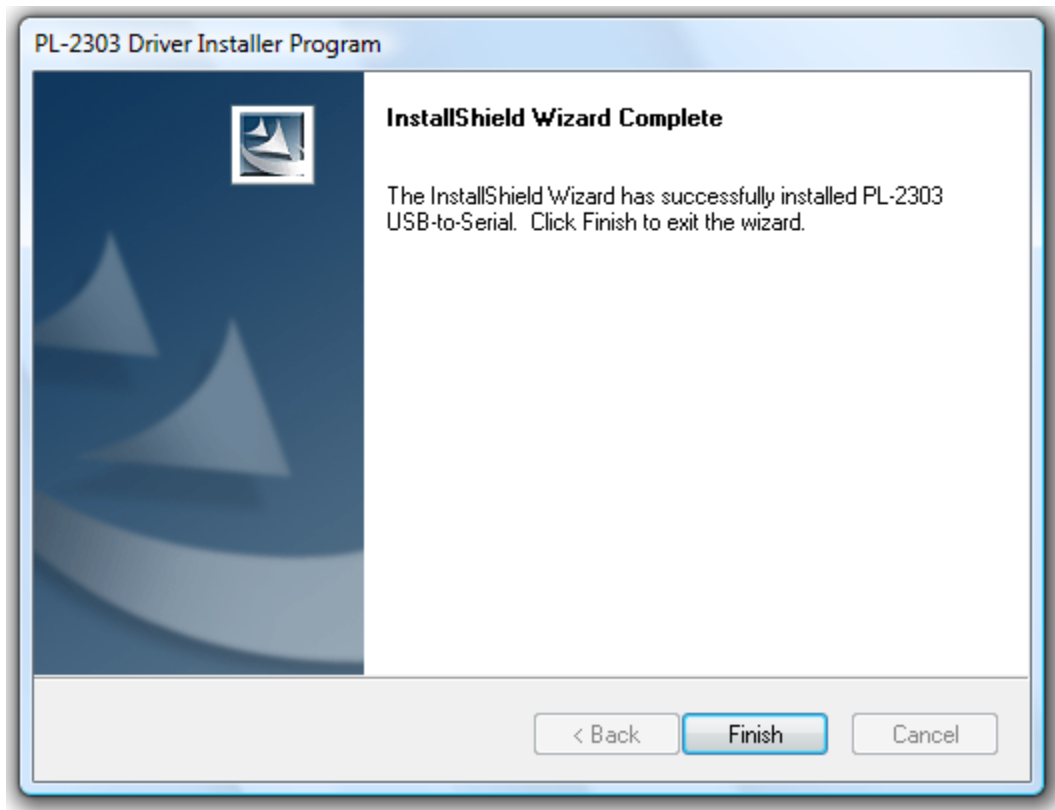
3.) This window would come up. Click **Next**.



4.) Let the program install by itself.



5.) Once it is done, press **Finish**. You have successfully installed the driver.



6.) Restart your computer.