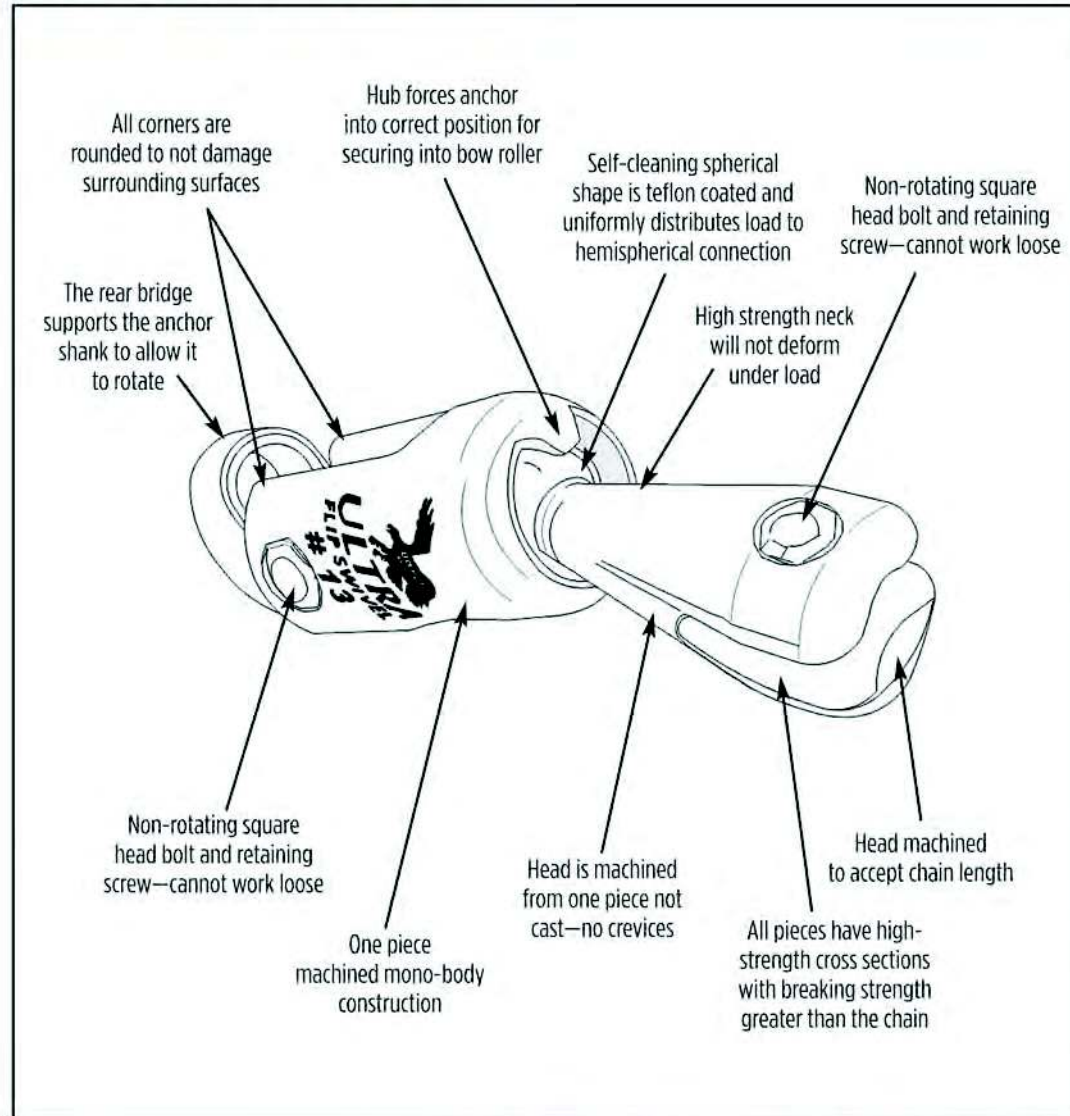
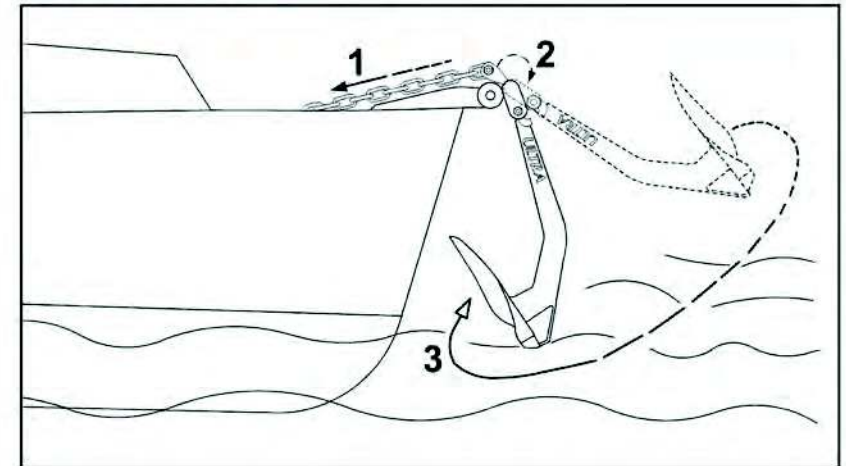


# Ultra Flip Swivel

## Ultra Flip Swivel Points of Interest

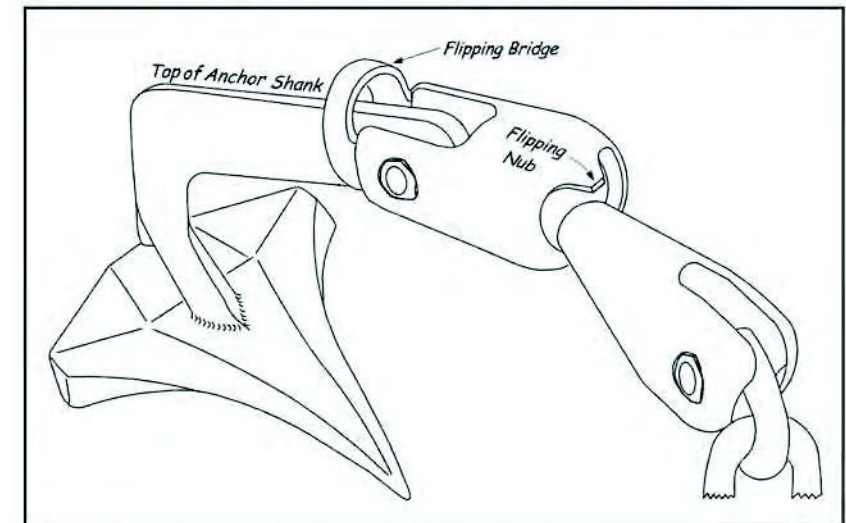


## How the Ultra Flip Swivel Works



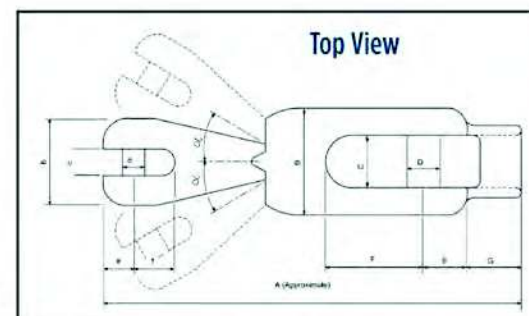
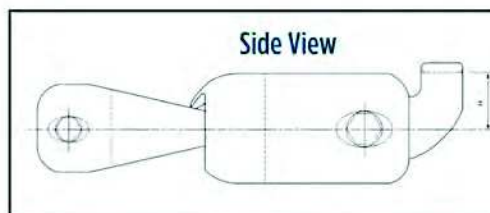
## The proper installation of Ultra Flip Swivel on an anchor

Use medium thread blocker such as 242 Loctite or medium Permetex



8700 Warner Ave. #110, Fountain Valley, CA 92708  
 Phone 714-843-6964 • Fax 714-843-6906 • sales@quickline.us  
[www.quickline.us](http://www.quickline.us) or [www.ultraanchors.us](http://www.ultraanchors.us) for more information

# Ultra Flip Swivel



## Dimensions & Specifications

Unit #	Anchor Chain Size (in.)/(mm)	Breaking Strength (lbs.)	Length (A mm)	Chain Part (mm) (bxcxdxef)	Anchor Part (mm) (B x C x D x E x F)	Flipping Bridge (G x H) (mm)
UFS06	1/4 (6)	7,308	121	25 x 7.6 x 7 x 9 x 11	35 x 16 x 11 x 13 x 31	14 x 17
UFS08	5/16 (8)	12,410	147.5	30 x 9.4 x 9 x 11 x 14.5	40 x 19 x 13 x 16 x 36.5	18.5 x 20
UFS10	3/8 (10)	18,830	168	35 x 11.6 x 11 x 13 x 17	45 x 21 x 14.5 x 18 x 40	21 x 22.5
UFS13	1/2 (13)	38,600	211.5	45 x 15.2 x 14.5 x 16.5 x 23	55 x 26 x 18 x 23 x 51.5	26.5 x 30
UFS16	5/8 (16)	63,820	250	53 x 18.2 x 18 x 20 x 27	65 x 30.6 x 22 x 27 x 59	33 x 36
UFS20	3/4 (20)	93,030	309	65 x 23 x 22 x 26 x 34	80 x 38 x 26 x 32 x 72	40 x 40.5
UFS26	1 (26)	127,640	308	80 x 30 x 26 x 33 x 43	100 x 48 x 32 x 40 x 77	(No Bridge)

Custom orders for large vessels are welcomed. Provide your chain and anchor size, and we'll quote you a price. Ultra Bearing Swivel for Super Yachts up to 26 mm Chain and 500 kg Anchors — and larger.

- Strongest way to connect chain to anchor
- Makes easy passage of anchor over bow roller WILL NOT BIND like shackles!
- Back bridge supports anchor over roller to allow anchor to rotate into correct position
- Ball coated with Teflon to provide smoother rotation and a more durable surface
- Nub forces anchor to side so anchor's own weight causes it to rotate into proper position
- Assists in aligning anchor with bow roller
- Stainless steel swivel swings 30 degrees before set anchor position is impacted
- Stronger than anchor chain
- Head hex bolt will not rotate

Put an end to galvanized or corroded anchor chain shackles. The Ultra Flip Swivel is a beautifully crafted 316L stainless steel swivel that is strong, safe and the most efficient way to connect your anchor chain to the anchor better than any other device or system.

The swivel head allows the chain to move 30 degrees in every direction without disturbing or dislodging a set anchor. Its breaking strength is greater than the chain. The ball and socket design is self-cleaning so it always rotates. Teflon coating of ball ensures smooth rotation.

When retrieving the anchor, Ultra Flip Swivel forces the anchor off center, which allows gravity to rotate the anchor upright and aligning it with bow rollers, thus avoiding wear and tear on the windlass and deck hardware. The rear bridge supports the anchor shank to allow it to rotate. No more reaching over the bow rail on a pitching foredeck to adjust the anchor position and stow it. It enhances safety in that it reduces your time on a rolling deck.

(See video on [www.Quickline.us](http://www.Quickline.us))

