

HINGE BOLT & NUT
Stainless steel

REAR COVER

HANDLE
Stainless steel with P.V.C. grip

DECK SEAL RING (Optional)

DECK SEAL (Optional)

**U/D L/T
ALTERNATIVE ROCKER
ARMS COMPLETE**

**ROCKER ARM
COMPLETE T/A**

DIAPHRAGM
Nitrile rubber

DIAPHRAGM PLATES

BODY

OUTLET VALVE
Nitrile rubber

ROCKER ARM NUT

INLET VALVE PLATE

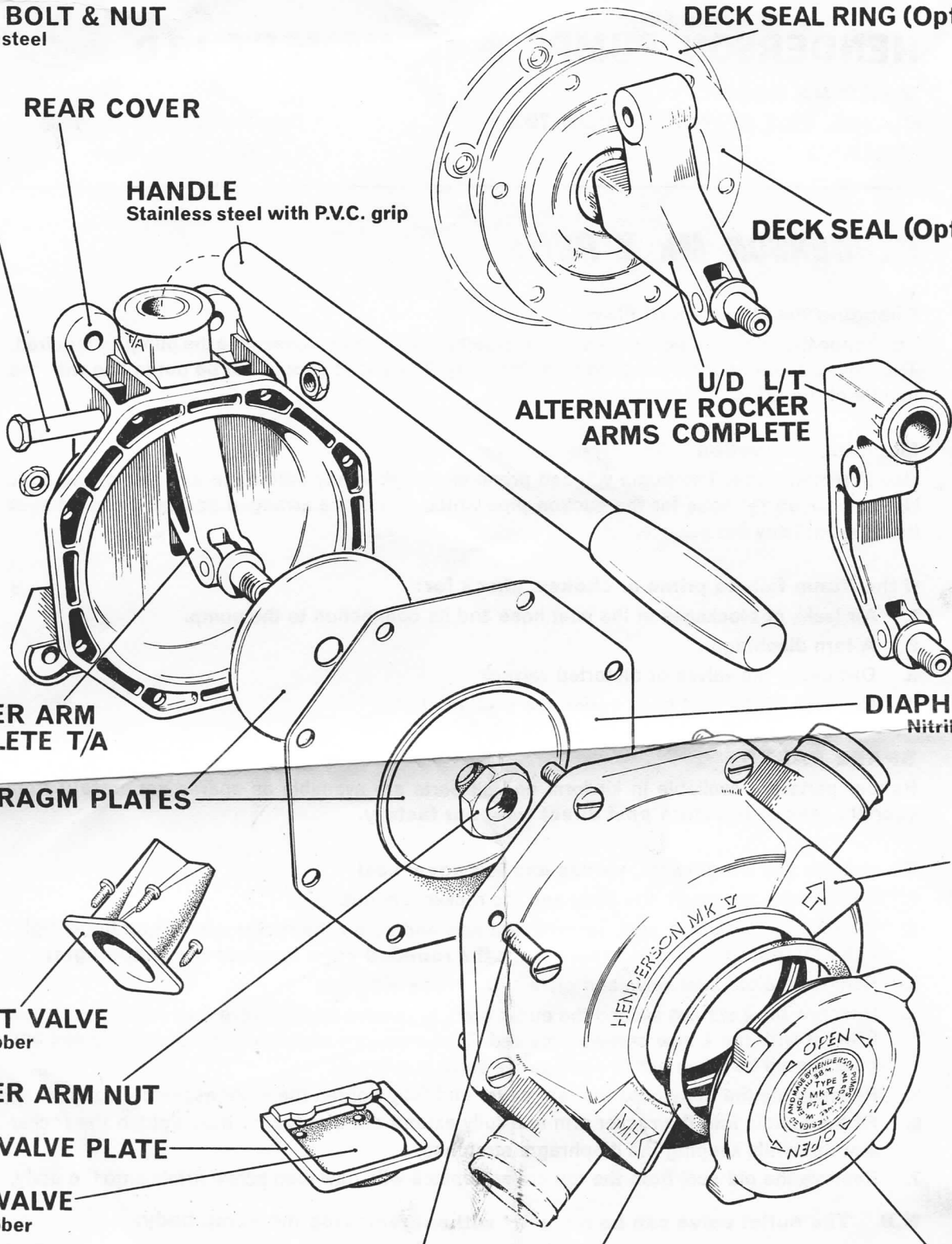
INLET VALVE
Nitrile rubber

1in ASSEMBLY BOLT & NUT
Stainless steel

COVER SEAL
Nitrile rubber

TOP COVER

Henderson mk.V Pump



HENDERSON PUMPS & EQUIPMENT LTD

38 MEDINA ROAD
COWES, ISLE OF WIGHT, PO31 7BZ
ENGLAND

Telephone 098-382-3732/5206
Telex 86656 Ratsey

HENDERSON Mk V PUMP

Changing the Direction of Flow

To change the flow direction, remove the 8 assembly bolts, and reassemble the pump as required. The valves should not be removed from the body. The outlet should not be put in line with the handle of the L/T or T/A versions.

Mounting Instruction

Use $\frac{1}{4}$ " (6mm) bolts. The pump will self prime and work in any attitude in any part of the boat. Use reinforced $1\frac{1}{2}$ " hose for the suction pipe which should be arranged so that it cannot suck itself against any flat surface.

If the Pump fails to prime or chokes, check for:

1. Air leaks or blockages in the inlet hose and its connection to the pump.
2. A torn diaphragm.
3. Dirt under the valves or distorted valves.
4. Collapse of the inlet hose during the suction stroke.

SPARE PARTS

Rubber parts are available in kit form and all parts are available as spares separately from your chandler or by **return post direct from our factory.**

To change the Diaphragm, valves and top cover seal

1. Remove the top cover, the body and the rocker arm nut.
2. Remove the old diaphragm, replace with new and screw the rocker arm nut on finger tight. **(The Diaphragm plates should have the rounded edge towards the Diaphragm).**
3. Remove the old inlet valve and plate and replace with new.
4. Unscrew the 4 screws around the outlet branch, remove the old valve then replace with new fixing it with the 4 new screws provided. These screws should not be over tightened and care should be taken not to damage the valve in any way.
5. Reassemble the body onto the rear cover and fully tighten the eight assembly bolts.
6. Fit the handle into the rocker arm and fully extend the diaphragm then tighten the rocker arm nut while keeping the diaphragm stretched.
7. Remove the old seal from the top cover, replace with new then screw firmly onto the body.

N.B. The outlet valve can be replaced without removing the pump body.

Extra Equipment

Watertight Deck Seal for U/D model.
Nylon Skin Fitting for $1\frac{1}{2}$ " Hose.
Reinforced Hose $1\frac{1}{2}$ " bore.
Stainless Steel Hose Clips.